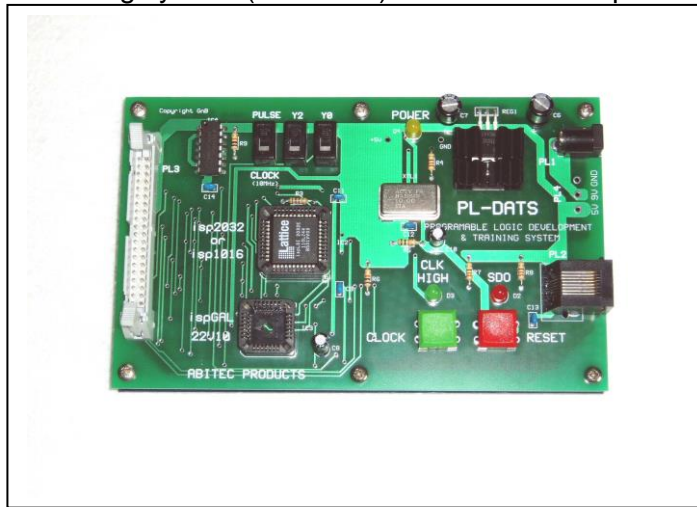


PL-DATS

PROGRAMMABLE LOGIC DEVICE DEVELOPMENT & TRAINING SYSTEM

The ABITEC Programmable logic development and training system (PL-DATS) has been developed as a low cost solution to the introduction of "In system" Programmable Logic Device (PLD) programming and application.

Using a proprietary, introductory level, PLD development software, programs can be developed on a Personal Computer. By connecting the PL-DATS hardware to the parallel port of the PC, programs can be downloaded into an "In system programmable" (ISP) device. The device can be repeatedly re-programmed without removal from the hardware.



The ABITEC PL-DATS is available as a complete system comprising of the powerful but easy to use LATTICE isp Design Expert Starter Software together with the ABITEC PL-DATS hardware and Applications board Experiment manual. (The PL-DATS hardware is also compatible with the LATTICE isp Design Expert Software pack).

The PL-DATS hardware has an Input/Output connector, which can be linked directly to an Abitec Applications board. A comprehensive tutorial in the form of an Experiment manual is supplied with the PL-DATS enabling students to program the PL-DATS on board PLD to control various functions on the applications board. Alternatively the ABITEC 2mm I/O Unit or the ABITEC Switch and Lamp module can be connected to the Input/Output connector allowing the user access to the I/O for their own applications.

Development Software

The LATTICE isp Design Expert Starter Software (V8.4) is on CD-ROM (supports Windows 95, 98, XP, NT4 and WIN2000) and includes:

isp Encyclopaedia * Applications notes * Design Techniques * Lattice Data book * isp Development and Download software

PL-DATS versatile hardware consists of:

- The hardware module - an open board module 100mm x 160mm with a 44 pin PLCC socketed ispLSI2032E-80LJ, provision for a 28 pin PLCC socket suitable for a ispGAL22v10, power supply socket and regulator components, I/O and isp download cable connectors.
- Power Supply Unit - mains adaptor style plugs directly into the hardware module.
- User and Applications board Experiment manual.
- isp download cable with parallel port adaptor.

Ordering Information: Programmable Logic Device DATS.....PL-DATS (specify UK, US or EU type PSU)

Options

- ABITEC Applications board.....APPS-BD
- ABITEC Switch & Lamp Module....SW-LP MOD
- ABITEC 2mm Input/Output Unit.....I/O UNIT

ABITEC PRODUCTS, No 4 THE FARM, Littleton Panell, Nr Devizes, SN10 4AX., UK
Tel No: +44 (0) 1380 812378,
E-mail : sales@abitec.co.uk